



Area  
**90 m<sup>2</sup>**



Type  
**Office**

Floor  
**8 / 12**

Rooms  
**3**



Construction year  
**2020**



Commercial object  
**For rent**

**9 500 PLN**  
106 PLN / m<sup>2</sup>

Offer no: 488268

## WARSZAWA, WOLA, OGRODOWA

### Premises in the center of Warsaw

#### OFFICE PREMISES IN THE CENTRE OF WARSAW

*90 m2 / 3 Rooms / New building / Parking space in underground garage*

\*\*\*\*\*

#### PREMISES LAYOUT:

The premises of 90 m2 consist of:

- A room with an exit to the terrace,
- two separate rooms,
- a separate kitchen,
- a hallway/reception room,
- bathroom.

#### INVESTMENT:

Ogrodowa Apartments is a unique premium project, combines contemporary architecture with the best traditions of Polish pre-war modernism. Designed with great attention to detail, they offer stunning views of Warsaw.

The Apartamenty Ogrodowa development is located in Mirów, was developed by Dom Development S.A. and is scheduled for completion in Q4 2020.

The building has a reception area, a patio, and a children's playground within the development.

Ogrodowa Apartments is an attractive place, especially for those interested in buying a flat for investment purposes.

#### LOCATION:

Located on the left bank of Warsaw, near the city centre, the Wola district is one of the most densely and populous areas of the city. The former industrial area, which once housed large blocks of flats, is still a cluster of high-rise buildings. Contemporary architecture consists mainly of modern, post-modern office buildings, such as the Atrium, Kredyt Bank buildings or the highest skyscraper in Wola – Warsaw Trade Tower.

Contemporary Wola is also an important centre of cultural life, as it is home to nationally and internationally renowned museums: the Warsaw Uprising Museum, the Museum of the History of Polish Jews and the Pawiak Prison Museum, as well as theatres, art galleries and cafes. The district's green areas consist of 4 parks and the Lasek na Kole (the Forest on the Circle), and the most important arterial roads are Al. Jana Pawła II and Trasa W-Z.

Wola's great asset is its location in the vicinity of Śródmieście (City Centre), so getting to the centre by bus or tram lines is not a problem. In 2019, the completion of the second metro line is planned. Trasa W-Z and Al. Jana Pawła II are the most important arteries in this part of the capital. Future residents of the Ogrodowa Apartments investment can benefit from an extensive network of transport links. At a distance of 110 metres from the Apartamenty Ogrodowa investment there is the nearest transport point – Wola-Ratusz 05.

**ADDITIONAL INFORMATION:**

\* In the price of administrative rent.

\* Electricity and internet are payable additionally.

\* Deposit required.

You are cordially invited to the presentation!

























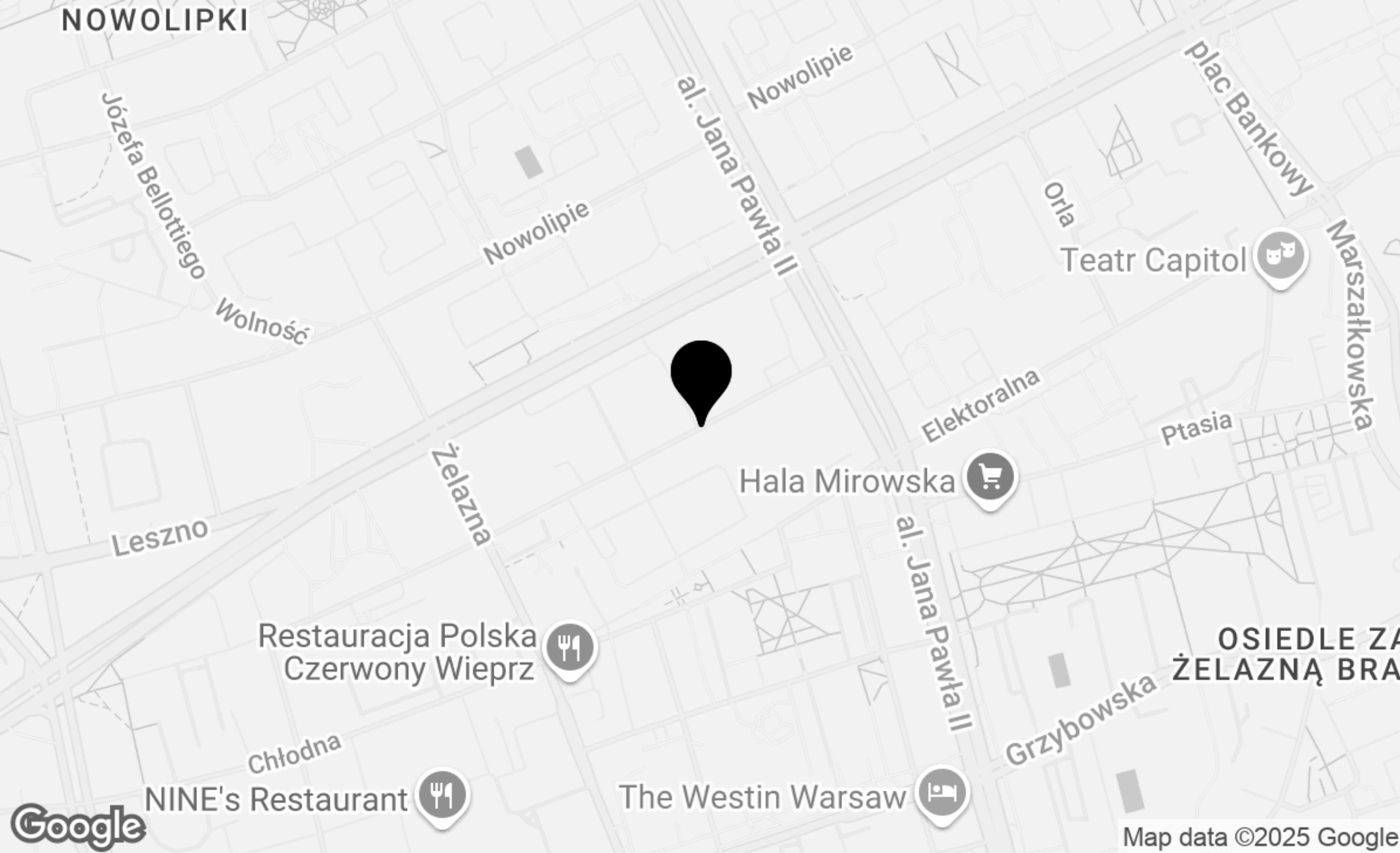




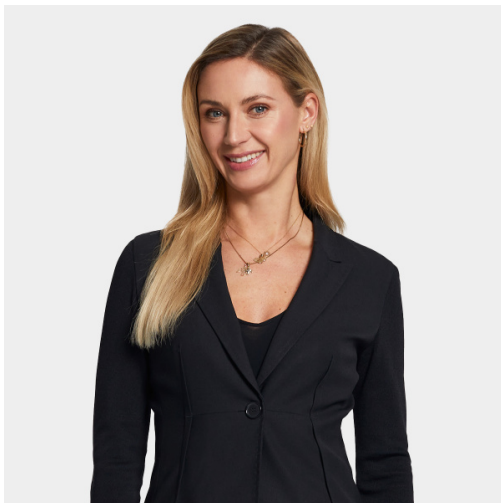


PROPERTY  
LOCATION





PROPERTY AGENT  
**CONTACT**



**ANNA STUBIŃSKA**

Senior Real Estate Advisor

phone: +48 690 001 301

email: [a.stubinska@partnersinternational.pl](mailto:a.stubinska@partnersinternational.pl)



**WARSAW**

Fort Piłsudskiego 2  
(entrance from Idzikowskiego street)  
02-704 Warsaw

+48 22 307 12 40

[info@partnersinternational.pl](mailto:info@partnersinternational.pl)

[najem@partnersinternational.pl](mailto:najem@partnersinternational.pl)

**TRÓJMIASTO**

Kopernika 12/1  
81-846 Sopot

+48 790 801 306

[trojmiasto@partnersinternational.pl](mailto:trojmiasto@partnersinternational.pl)