



Area  
62 m<sup>2</sup>

Floor  
5 / 8



Bedrooms  
1

Rooms  
2



Construction year  
2018



Apartment  
For rent

8 500 PLN  
137 PLN / m<sup>2</sup>

Offer no: 368173

## WOLA, MIRÓW, ZŁOTA

### Centrum | Wysoki standard | Taras 35 m2

#### UNIQUE APARTMENT IN THE VERY CENTER WITH A TERRACE

*High standard | For a couple or a single | Great neighborhood | Złote Tarasy*

\*\*\*\*\*

#### LAYOUT AND STANDARD:

The area of the presented apartment (62m2) consists of:

- \* Living room with open kitchen,
- \* Bedroom,
- \* Bathroom with shower.

Fully furnished, equipped with high quality furniture, finished with high quality materials. Oak parquet flooring, stucco, modern furnishings: fixtures by Villeroy & Boch and appliances by Gorenje, as well as stylish lighting and double doors are just some of the advantages of the apartment.

From the spacious living room we can find an exit to a large terrace of 40 m2.

Thanks to the panoramic windows, the interiors are bright and sunny.

#### BUILDING:

The intimate Zlota Chmielna Apartments development is located in the very center of Warsaw – 300 m from Złote Tarasy. The project was developed by the developer Moderna Sp. z o.o.

A building sheltered from the hustle and bustle of the city, with a total of 54 apartments. The investment is an excellent proposal for people who appreciate the proximity of all kinds of services and love the dynamic life of the city.

#### LOCATION:

Zlota Street is an address that puts all the best of city life at your fingertips. The neighborhood is full of luxury stores of famous brands, the best restaurants, five-star hotels. Great monuments, the most interesting events and the most important cultural institutions. Living on Zlota is an incredible time-saver. To experience what the beating heart of the capital offers.

In addition, right next door is the most important transportation point in the country – the Central Station, which provides quick rail access to the main cities of Poland and to both airports serving Warsaw. The city's main thoroughfares, running nearby, are also a great convenience.

**ADDITIONAL INFORMATION:**

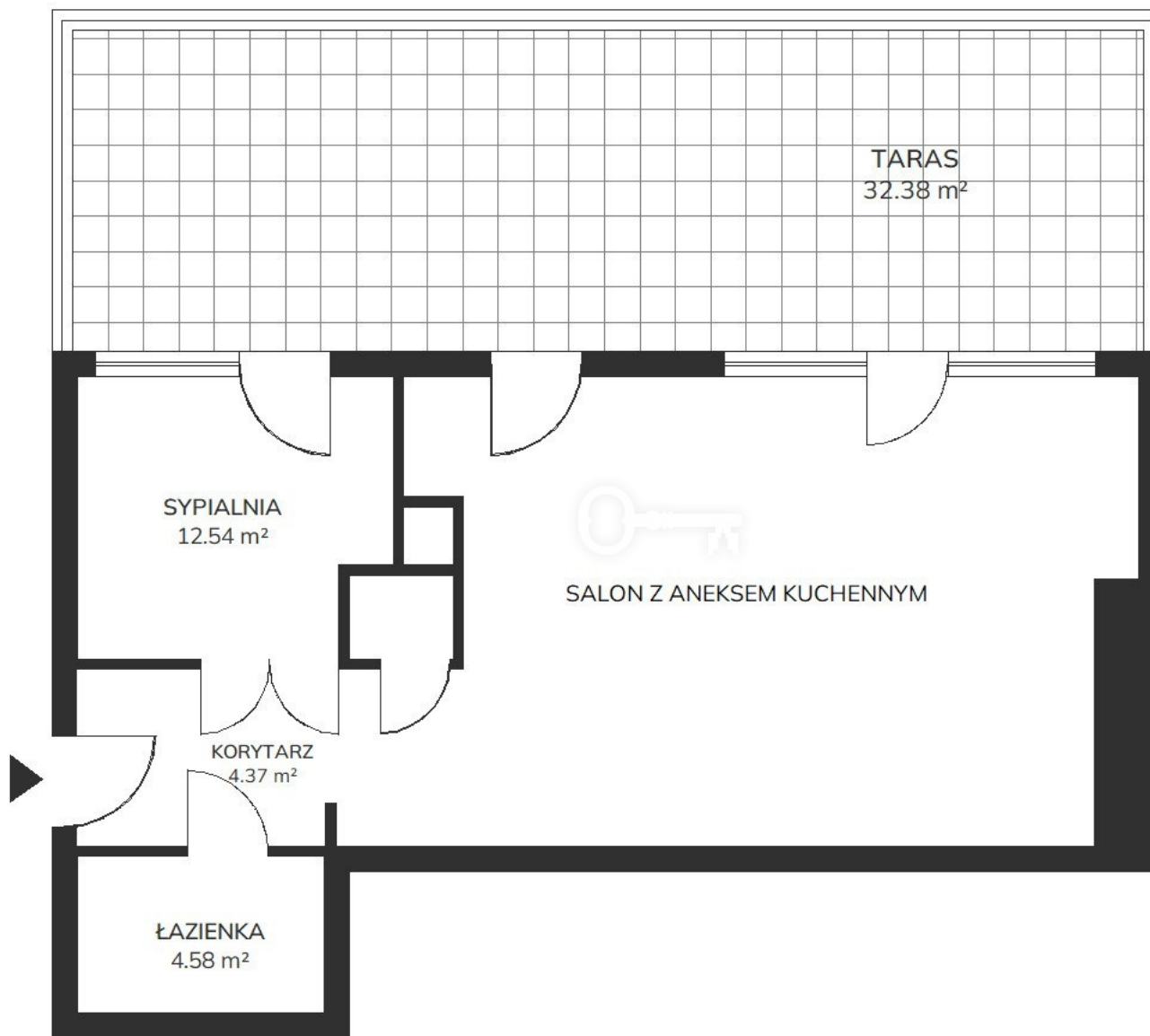
\* A storage unit is included in the rental price.

\* Tax payable consumption of utilities.

**You are cordially invited to the presentation!**













































































ZŁOTACHMIELNA  
APARTMENTS

PROPERTY  
LOCATION





PROPERTY AGENT  
**CONTACT**



**ŁUKASZ HETMAN**

Senior Real Estate Advisor

phone: +48 730 006 806

email: [l.hetman@partnersinternational.pl](mailto:l.hetman@partnersinternational.pl)



**WARSAW**

Fort Piłsudskiego 2  
(entrance from Idzikowskiego street)  
02-704 Warsaw

+48 22 307 12 40

[info@partnersinternational.pl](mailto:info@partnersinternational.pl)  
[najem@partnersinternational.pl](mailto:najem@partnersinternational.pl)

**TRÓJMIASTO**

Kopernika 12/1  
81-846 Sopot

+48 790 801 306

[trojmiasto@partnersinternational.pl](mailto:trojmiasto@partnersinternational.pl)