



Area  
**173 m<sup>2</sup>**



Type  
**Commercial premises**

Rooms  
**1**



Construction year  
**2017**



Commercial object  
**For rent**

**10 000 PLN**  
58 PLN / m<sup>2</sup>

Offer no: **782191**

WARSZAWA, PRAGA-POŁUDNIE, TYŚMIENICKA

## **Ideal premises for your business**

**Large area with the possibility of arrangement for your own needs !!!**

**Are you looking for a place for a nursery, SPA, restaurant, shop or Showroom? You just found it !!!**

A commercial property with large sites of the area 173 m<sup>2</sup>, located on the ground floor of a four-story residential building. It is perfect for both commercial and service activities. Possibility to change the layout of the rooms (demolition, erecting partitions).

### **Location**

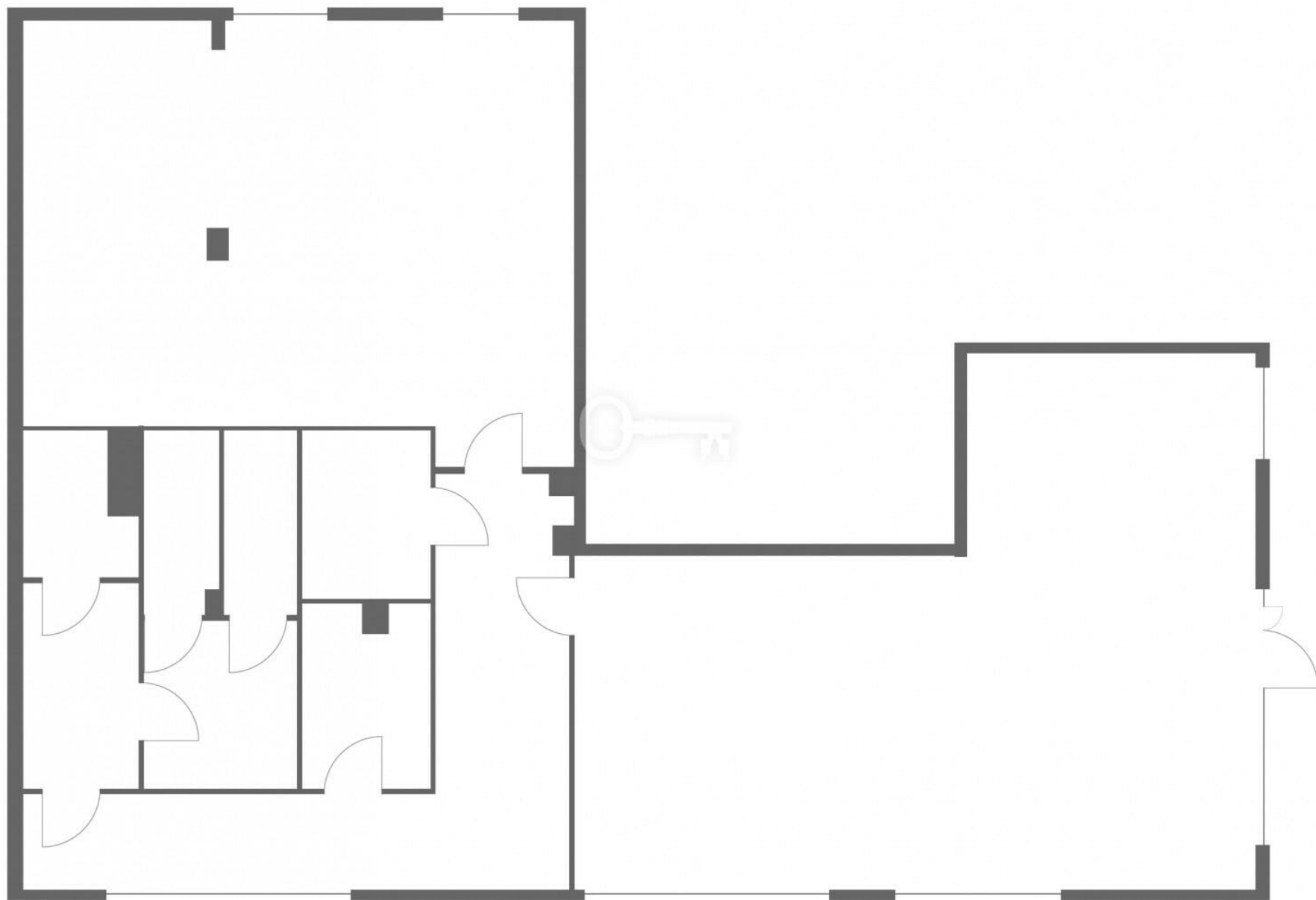
The property is located at ul. Tyśmienicka 2 in Praga Południe. Easy access by public transport and by car. The bus stop is 50 m from the building, 5 min walk from the tram stops at ul. Grochowska. Parking spaces available at the building.

### **Room layout**

sales room,  
cleaning room  
social room  
Toilets

It is possible to arrange the premises to suit your needs

**I encourage you to contact me !!!**







































PROPERTY  
LOCATION





PROPERTY AGENT  
CONTACT



ANDRZEJ HERZOG

Head of Rentals and Sales

phone: +48 730 606 001

email: [a.herzog@partnersinternational.pl](mailto:a.herzog@partnersinternational.pl)



**WARSAW**

Fort Piłsudskiego 2

(entrance from Idzikowskiego street)

02-704 Warsaw

+48 22 646 52 02

[info@partnersinternational.pl](mailto:info@partnersinternational.pl)

[najem@partnersinternational.pl](mailto:najem@partnersinternational.pl)

**TRÓJMIASTO**

Kopernika 12/1

81-846 Sopot

+48 790 801 306

[trojmiasto@partnersinternational.pl](mailto:trojmiasto@partnersinternational.pl)

The above proposal is not a commercial offer within the meaning of the law but is for information purposes. Partners International Sp. z o.o. makes every effort to ensure that the content presented in our offers is current and reliable. Data on offers was obtained on the basis of statements of the sellers.