

Offer no: R4343623

## MÁLAGA, BENAHAVÍS, BENAHAVÍS

### Plot or Land for sale in Benahavís

Surrounded by a pristine Andalusian landscape of rolling hills and mountains, yet a close distance to the Mediterranean coastline, this unique residential resort is Monte Mayor.

Monte Mayor totals 4.000.000m<sup>2</sup> of land with a low-density development concept as 58% will remain green zone.

The resort is situated in the township of Benahavís and offers stunning panoramic view to the surrounding natural landscape, the Mediterranean and Gibraltar as well as the African coastline beyond.

Marbella Club Golf resort and Flamingos Golf are nearby as well as the coast's myriad of amenities at a short car drive away.

For those looking for tranquility and stunning panoramic vistas amidst gorgeous natural surroundings, Monte Mayor could be your own piece of Andalucia!

This plot offers the best panoramic sea & mountain views and is situated within Monte Mayor's E-sector .

The plot has been levelled and holds two separate aspects to it, one residential and one commercial.

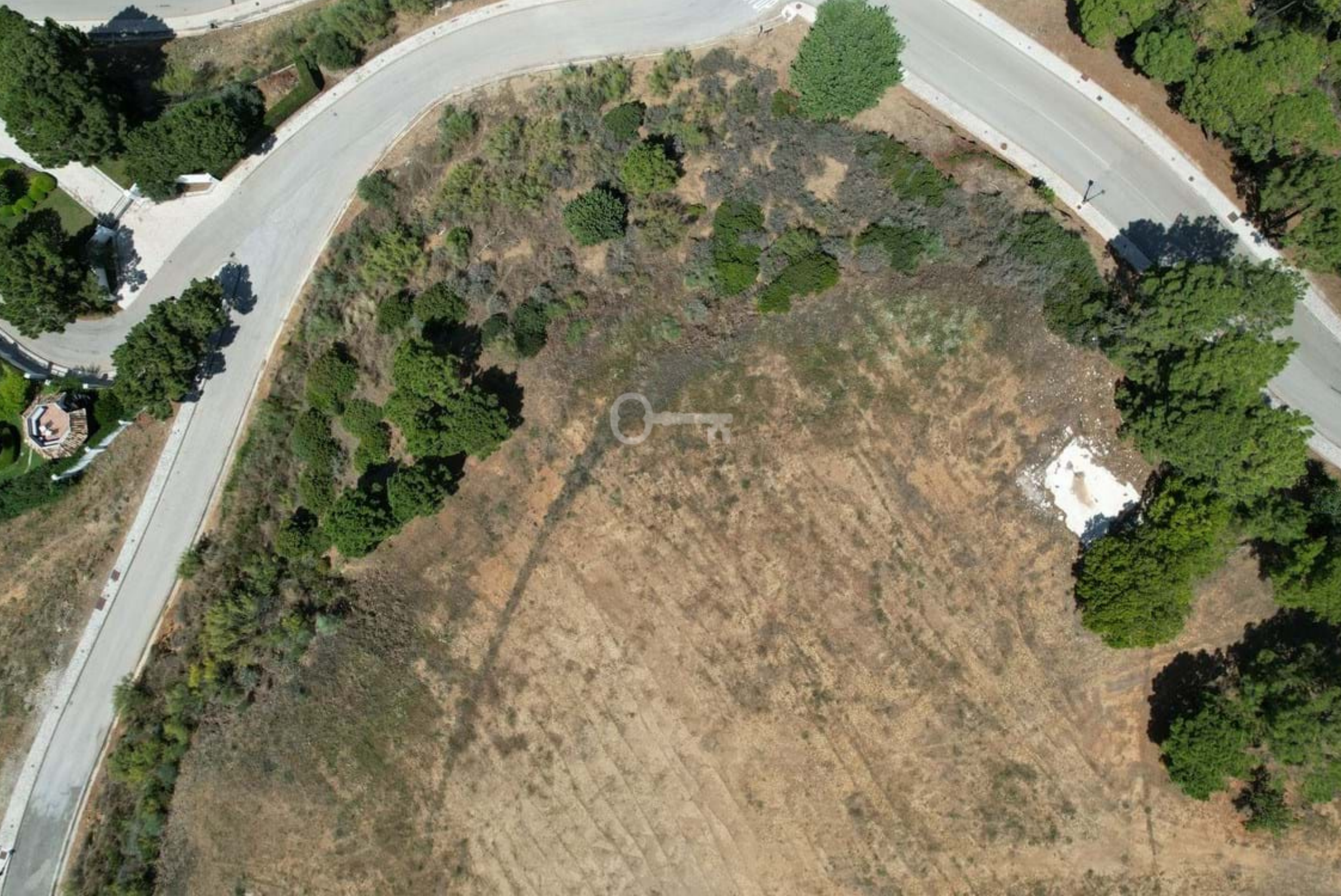
The residential part measures 13969m<sup>2</sup> and offers a build percentage of 12.2% or 1704m<sup>2</sup> (not including basement).

The commercial part measures 2870m<sup>2</sup> and offers a build percentage of 20% or 574m<sup>2</sup> (not including basement).

















PROPERTY  
LOCATION



PROPERTY AGENT  
**CONTACT**



**KLAUDIA BARTOSIEWICZ**

Head of International Department

phone: +48797680019

email: [klaudia.bartosiewicz@partnersinternational.pl](mailto:klaudia.bartosiewicz@partnersinternational.pl)



**WARSAW**

Fort Piłsudskiego 2  
(entrance from Idzikowskiego street)  
02-704 Warsaw

+48 22 307 12 40

[info@partnersinternational.pl](mailto:info@partnersinternational.pl)  
[najem@partnersinternational.pl](mailto:najem@partnersinternational.pl)

**TRÓJMIASTO**

Kopernika 12/1  
81-846 Sopot  
+48 790 801 306

[trojmiasto@partnersinternational.pl](mailto:trojmiasto@partnersinternational.pl)