



Area  
**222 m<sup>2</sup>**



Lot area  
**259 m<sup>2</sup>**

Rooms  
**6**



Construction year  
**1989**



House  
**For rent**

**8 000 PLN**  
36 PLN / m<sup>2</sup>

Offer no: 617168

## WARSZAWA, PRAGA-POŁUDNIE, WĄCHOCKA

### House in Saska Kępa for office purposes

House in terraced houses in Saska Kępa for office purposes.

The house is surrounded by other residential buildings converted into offices. The building is very well kept and the interior is bright and aesthetic.

#### LAYOUT OF THE ROOMS

Cellars:

1. utility room 21.9 m<sup>2</sup>
2. utility room 12 m<sup>2</sup>
3. communication 9.2
4. boiler room 3.8 m<sup>2</sup>
5. server room 12 m<sup>2</sup>
6. wc 2.5 m<sup>2</sup>
7. Garage of 16.7 m<sup>2</sup>

Ground floor

1. room 38.5 m<sup>2</sup>
2. room 12 m<sup>2</sup>
3. room 17.3 m<sup>2</sup>
4. hall 4.1 m<sup>2</sup>
5. WC 5.8 m<sup>2</sup>
6. 3 m<sup>2</sup> magazine

1st floor

1. room 26 m<sup>2</sup>
2. room 12.9 m<sup>2</sup>
3. room 13.4 m<sup>2</sup>
4. communication 8.1 m<sup>2</sup>
5. bathroom 5.9 m<sup>2</sup>

#### FINISHING STANDARD

Each room has lighting, some of them have air conditioning. There are carpets on the floor. There is a reception desk on the ground floor at the entrance. There is a kitchenette on the first floor in the hall.

#### ADDITIONAL INFORMATION

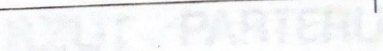
There is possibility to park 3 cars directly in front of the building and one in the garage. There is an optical fiber and small garden at the back of the building. The house is available from June 1st.

**Contact: Kinga Sistermann: +48 536162000**

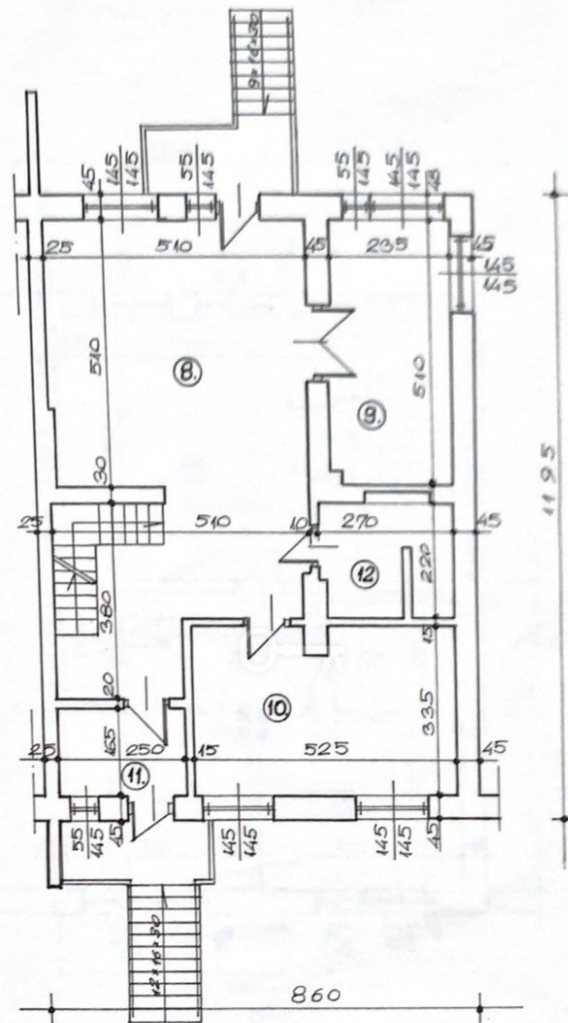
Broker responsible: Joanna Czapska (professional license no. 4585)

The above information is not a commercial offer for the purposes of the law, but is informative. All data relating to the real estate was obtained on the basis of statements of the Landlords.

As a real estate agency we charge a commission.



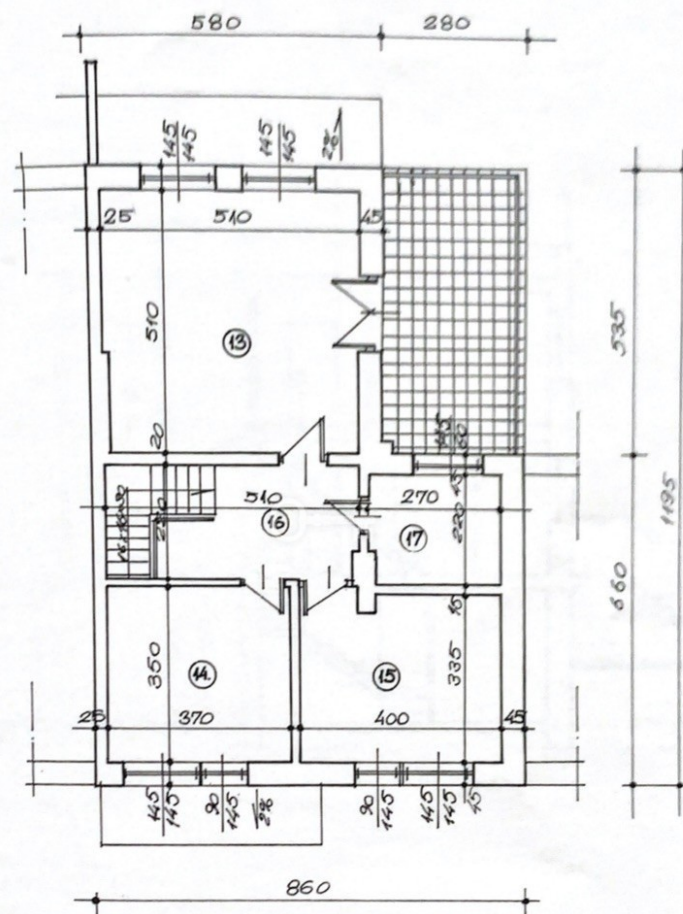
OUT PARTERU



RZUT PARTERU

RZUT PIĘTRA





RZUT PIĘTRA

























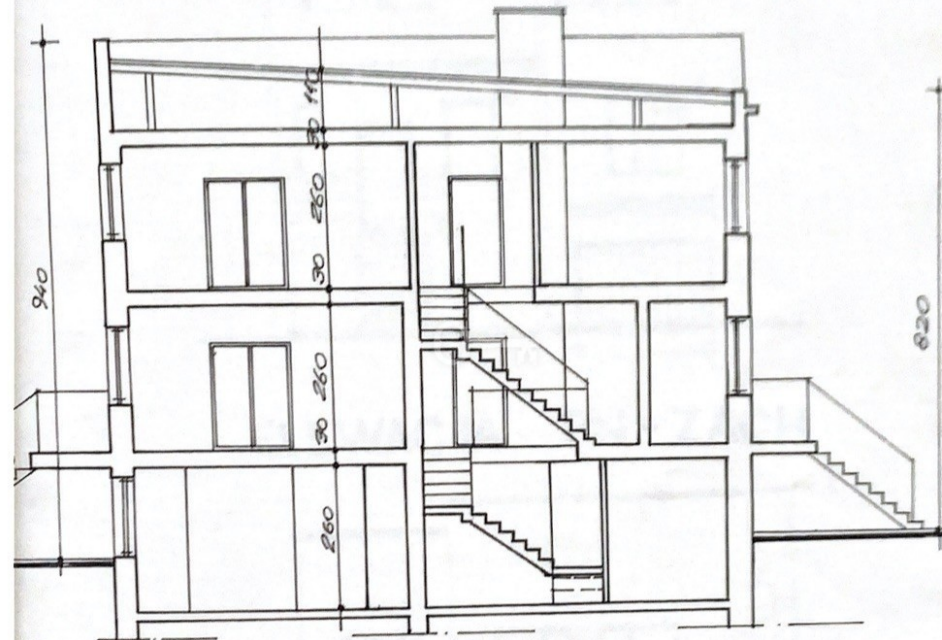












PRZĘKROJ A-A





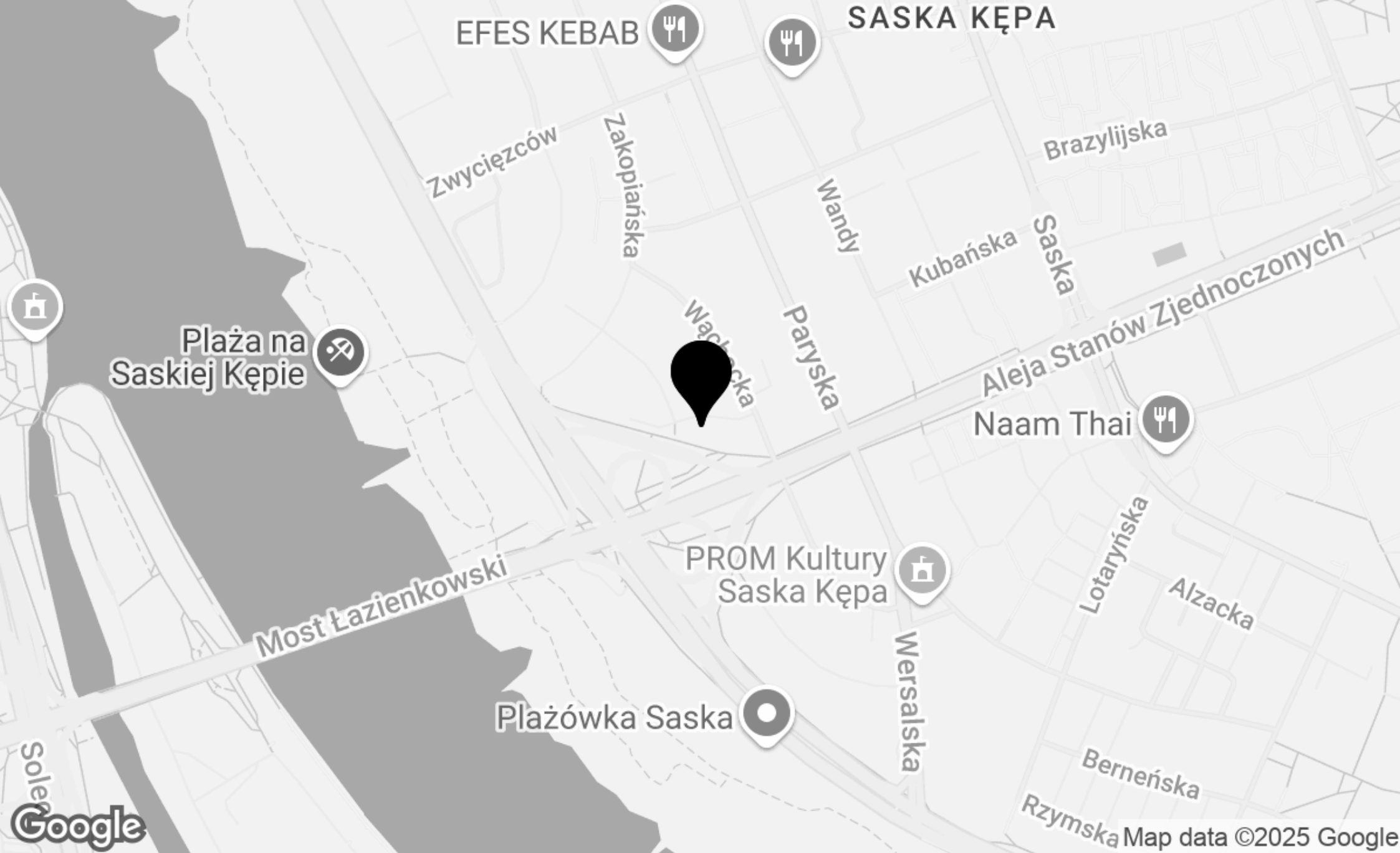
**ELEWACJA PN - ZACH**



**ELEWACJA PD - WSCH**

PROPERTY LOCATION





PROPERTY AGENT  
**CONTACT**



**KINGA SISTERMANN**

Senior Real Estate Advisor

phone: +48 536 162 000

email: [k.sistermann@partnersinternational.pl](mailto:k.sistermann@partnersinternational.pl)



**WARSAW**

Fort Piłsudskiego 2  
(entrance from Idzikowskiego street)  
02-704 Warsaw

+48 22 307 12 40

[info@partnersinternational.pl](mailto:info@partnersinternational.pl)

[najem@partnersinternational.pl](mailto:najem@partnersinternational.pl)

**TRÓJMIASTO**

Kopernika 12/1  
81-846 Sopot

+48 790 801 306

[trojmiasto@partnersinternational.pl](mailto:trojmiasto@partnersinternational.pl)